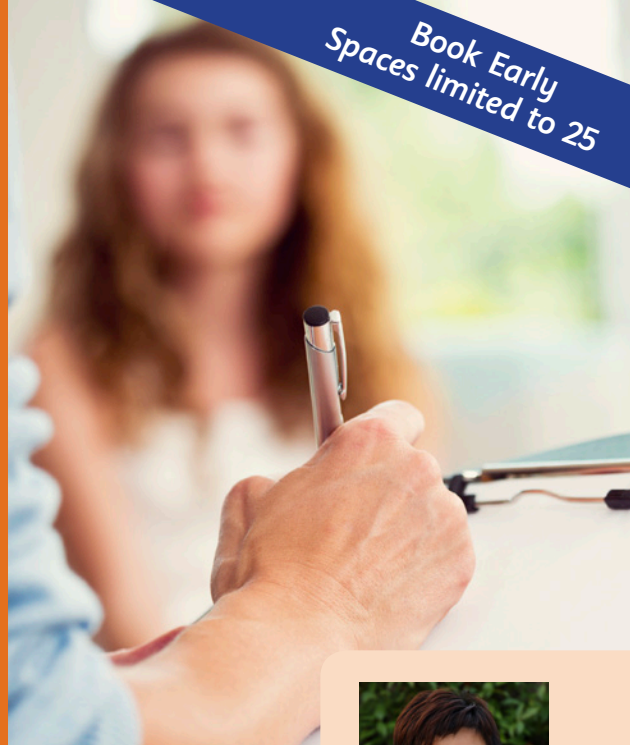


Book Early
Spaces limited to 25

Diagnosing dyslexia and providing recommendations for intervention

A practical workshop for psychologists



Presenter:
Stanley Cheng

This workshop is designed for psychologists who want to acquire the clinical skills to be able to confidently assess dyslexia. It will focus on the practical skills in conducting diagnostic assessment for dyslexia and provide hands-on recommendations based on the contemporary research.

Learning outcomes

At the end of the training, participants are able to:

- Define and understand dyslexia based on the DSM-5 criteria and the contemporary research
- Develop an effective referral model to assist schools/parents in identifying individuals who display dyslexic features
- Select the appropriate test batteries to conduct diagnostic psycho-educational assessment
- Develop and interpret a dyslexia profile
- Provide effective intervention strategies and recommendations for individuals with dyslexia

According to the Rose report, specific learning disability in reading (dyslexia) is a learning disability that primarily affects the skills involved in accurate and fluent word reading and spelling. About 4–8% of population have dyslexia, i.e. 1–2 students in every classroom on average. However, many individuals with dyslexia are un-diagnosed in Australia. If learning difficulties are not identified and supported appropriately, it is likely that they would have more psychological and/or behavioural problems later in life.

Course outline

Understanding of dyslexia This workshop will provide a comprehensive understanding of dyslexia, including the possible neuro-biological causes and the comorbidity of dyslexia, the characteristics and the clinical presentation of individuals with dyslexia. Different approaches in dyslexia assessment, such as the DSM-5 criteria and the Response To Intervention Model will be explored.

Diagnostic assessment of dyslexia The second part of the workshop focuses on the practical procedure in conducting comprehensive psycho-educational assessments for diagnosing dyslexia, based on the contemporary research. It also includes strategies to accurately identify individuals with a tendency to dyslexia for further assessment. The selection of the appropriate test batteries, as well as the approach to develop and interpret a dyslexia profile will also be covered. Case studies will be used for practice in interpretation.

Intervention strategies and recommendations A range of practical strategies and recommendations for an individual's specific learning needs will be covered including general teaching principles, classroom and examination accommodations, computer software and assistive technology, as well as intervention strategies targeting an individual's specific literacy weaknesses.

About the trainer

Stanley Cheng

BSci (Psy), PgDipPsy, PGDE, MEdPsy, MAPS

Stanley Cheng is a teacher-trained psychologist and a member of Australian Psychological Society. He has been working as a psychologist within the public school system in Victoria and is also a psychologist at SPELD Victoria. He has delivered dyslexia training for teachers; and has provided coaching for speech pathologists and psychologists in dyslexia assessment.

Stanley has brought unique experience of dyslexia from overseas. Before becoming a psychologist, he was a registered teacher in Hong Kong, providing group interventions for students with dyslexia across primary and secondary school settings. He also worked as an integration co-ordinator in a secondary school, managing the inclusive educational supports for about 80 students (10% of the school population) with dyslexia.

He was invited by The Hong Kong Institute of Education (a university specialising in teacher training) to share his teaching experience in dyslexia. Stanley is passionate about working with individuals with learning difficulties; his mission is to enhance the public awareness of the importance of supporting individuals with specific learning difficulties.

Presented by SPELD Victoria

Date: Friday 5th June

Duration: 9 am–5 pm Registration from 8.45 am

Location: SPELD Victoria 60 High Street, Preston VIC 3072

Cost: \$220 Early bird if booked before 15th May then \$250 full fee. \$160 for psychology students.

Registration:

<http://diagnosing-dyslexia-practical-workshop.eventbrite.com.au>



SPELD Victoria Inc.

Dyslexia and other Learning Disabilities Support